



# The SonicWALL TZ 170 Series

TZ 170 SERIES

**Flexible and scalable layered security at a low total cost of ownership**

The SonicWALL® TZ 170 Series is the ideal total security platform for small networks including remote and branch offices and retail/POS deployments, providing organizations a choice between absolute ease-of-use for basic networks and unsurpassed flexibility for networks with more complex needs.

Integrating a deep packet inspection firewall, 802.11b/g secure wireless, gateway anti-virus, anti-spyware, intrusion prevention, content filtering, failover/failback technologies, and IPSec VPN capabilities into a cost-effective solution, the TZ 170 Series scales to protect your investment as your organization grows. Available in multiple hardware and node configurations, including the **SonicWALL TZ 170**, **TZ 170 SP**, **TZ 170 Wireless** and **TZ 170 SP Wireless**, the **TZ 170 Series** allows you to add features and functionality when your network needs them.

## Features and Benefits

**Powerful deep packet inspection firewall** protects against malicious application layer attacks originating from either internal or external sources

**Integrated gateway anti-virus, anti-spyware and intrusion prevention** shields the network from dynamic threats including viruses, spyware, worms, Trojans, software vulnerabilities, and other malicious code. Protection is also provided for peer-to-peer and instant messenger applications, enabling the worry-free use of these productivity enhancing tools

**Secure 802.11b/g wireless option** LAN provides IPSec and WPA secured, high-speed wireless connectivity

**Dynamic Domain Name Service (DDNS) support** drastically reduces the costs associated with hosting e-mail servers, Web servers and site-to-site VPN by allowing the use of dynamic IP addresses

Integrated and **automated failover/failback** technologies ensure continuous network uptime by automatically switching to a secondary WAN or to the integrated analog modem should the primary connection fail

**Intuitive configuration wizards** simplify even the most complicated tasks, including VPN set-up and NAT configuration

**Advanced NAT modes** offer greater control and flexibility to support and manage various NAT requirements

Award-winning Global Management System (GMS) provides comprehensive **global management and reporting** tools for simplified configuration, enforcement and management of global security policies, VPN and services, all from a central location

\*Requires Gateway Anti-Virus, Anti-Spyware and Intrusion Prevention Service subscription

- **Powerful deep packet inspection firewall**
- **Integrated gateway anti-virus, anti-spyware and intrusion prevention support**
- **Secure 802.11b/g wireless option**
- **Dynamic Domain Name Service (DDNS) support**
- **Automated failover/failback**
- **Intuitive configuration wizards**
- **Advanced NAT modes**
- **Global management and reporting**

### TZ 170

Powerful, proven network protection for smaller and distributed networks

### TZ 170 Wireless

802.11b/g secure wireless platform to set your business free

### TZ 170 SP

Integrated analog modem provides failover/failback for critical deployments, such as retail or healthcare

### TZ 170 SP Wireless

Trusted secure wireless and integrated analog modem for the ultimate in reliable wire-free networking



**Key Features**

**Security**

- **Deep packet inspection firewall** plus dynamically updated SonicWALL Gateway Anti-Virus, Anti-Spyware and Intrusion Prevention Service guarantee protection against the latest threats
- **Advanced security services** provide layered security, including gateway anti-virus, anti-spyware, intrusion prevention and content filtering

**Wireless\***

- **Wireless intrusion detection services** protect wireless networks from wireless security threats and rogue access points
- **Wireless firewalling** provides control over the communications between the appliance and connecting clients
- **Enforced IPsec encryption and WPA** on the WLAN offer the highest available security for wireless traffic
- **Wireless guest services** provide customers, partners and guests with wireless Internet-only access
- **Lightweight HotSpot messaging** provides support for external authentication via back-end systems for businesses providing wireless HotSpot services
- **Distributed WLAN support** creates seamless integration and management of SonicPoint™ satellite access points

**Business Continuity\*\***

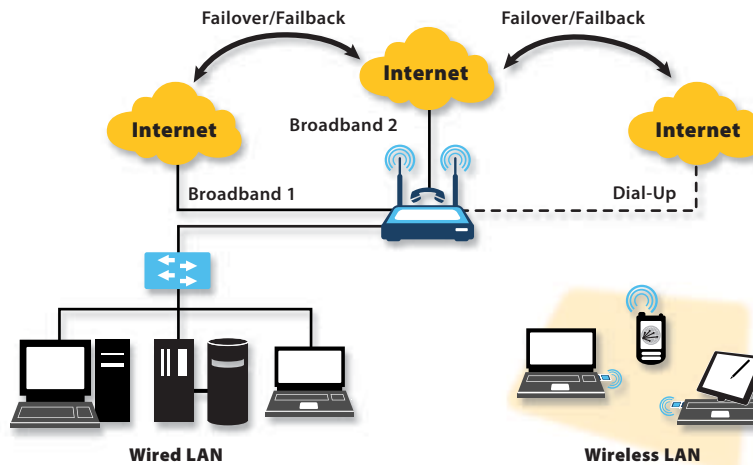
- **Integrated and automated failover and failback** technologies ensure continuous uptime for IPSec VPN tunnels while also providing the best connection speed possible
- **Broadband-to-broadband-to-analog WAN redundancy** provides unparalleled network uptime via multiple WAN redundancies
- **WAN/WAN failover and load balancing** offer round-robin, percent-based and spill-over load balancing

**General**

- **Integrated 5-port auto-MDIX switch** allows multiple computers to network together
- **System-on-a-chip technology** delivers 90 Mbps of stateful packet inspection firewall and 30+ Mbps 3DES and AES throughput
- **Optional port** can be configured as a second LAN, a second WAN, a DMZ or as a WLAN for maximum network configuration flexibility
- **Advanced NAT modes** create flexible site-to-site connectivity and management
- **Award-winning Global Management System (GMS)** enables comprehensive management and reporting

\*Available on Wireless models

\*\*Available on SP models



**SonicOS**

SonicOS Standard allows rapid deployment in basic networks with a user-friendly Web interface and powerful wizards. Building upon SonicOS Standard, SonicOS Enhanced is a sophisticated software upgrade that provides advanced features for more complex network installations.

Features	SonicOS Standard	SonicOS Enhanced
Streamlined GUI	■	■
Advanced Management Wizards	■	■
Scheduled & Prompted Dial-out	■	■
WAN ISP Failover		■
Object-based Management		■
Policy-based NAT		■
SonicPoint Management		■
Configurable Optional Port	As Workport (TZ 170 only)	As Workport, LAN, WAN, WLAN, DMZ (on all models)

SonicWALL's  
TZ 170 Series  
is the ultimate  
total security  
platform  
for small  
networks,  
including  
remote and  
branch offices  
and  
retail/POS  
deployments

# Specifications

Firewall	TZ 170 SP Wireless	TZ 170 SP	TZ 170 Wireless	TZ 170
Nodes Supported	10 (25 and Unrestricted by node upgrade)		10, 25 and Unrestricted	
Stateful Throughput	90 Mbps <sup>†</sup>			
Deep Packet Inspection	Protection from viruses, spyware, worms, Trojans and application layer attacks Requires Gateway Anti-Virus, Anti-Spyware and Intrusion Prevention Service subscription			
Gateway Anti-Virus Throughput	8 Mbps <sup>†††</sup>			
Connections	6,000			
Policies	100 (SonicOS Standard)/250 (SonicOS Enhanced)			
Denial of Service Attack Protection	22 classes of DoS, DDoS and scanning attacks			
VPN	TZ 170 SP Wireless	TZ 170 SP	TZ 170 Wireless	TZ 170
3DES/AES Throughput	30+ Mbps <sup>†</sup>			
Site-to-Site VPN Tunnels	10 Node: 2 25 Node: 10 Unrestricted Node: 10			
Bundled Global VPN Client Licenses for Remote Access	Optional			10 Node: Optional 25 Node: 1 Unrestricted Node: 1
Encryption	DES, 3DES, AES (128, 192, 256-bit)			
Authentication	MD5, SHA-1			
Key Exchange	Manual Key, PKI (X.509), IKE			
XAUTH/RADIUS	Yes			
L2TP/IPSec	Yes			
Certificate Support	Verisign, Thawte, Baltimore, RSA Keon, Entrust, and Microsoft® CA for SonicWALL-to-SonicWALL VPN			
Dead Peer Detection	Yes			
DHCP Over VPN	Yes			
IPSec NAT Traversal	Yes, NAT_Tv00 and v03			
Redundant VPN Gateway	Yes			
Single-arm VPN	N/A	Yes (Not available on SonicOS Enhanced)		
Deep Inspection Security Services	TZ 170 SP Wireless	TZ 170 SP	TZ 170 Wireless	TZ 170
Gateway Anti-Virus, Anti-Spyware and Intrusion Prevention Service	Comprehensive signature database. Peer-to-peer and instant messaging control and signature updates through Distributed Enforcement Architecture <sup>1</sup>			
Content Filtering Service (CFS) Standard Edition	URL, keyword and content scanning ActiveX®, Java Applet, and cookie blocking <sup>2</sup>			
Gateway-enforced Network Anti-Virus	(SMTP, POP3) Enforced McAfee™ Clients <sup>3</sup> E-mail attachment blocking			
Bundled Features	90 days 8x5/international support, Global VPN Clients and services as described above			
Networking	TZ 170 SP Wireless	TZ 170 SP	TZ 170 Wireless	TZ 170
DHCP	Relay, internal server			
NAT Modes	1:1, 1:many, many:1 <sup>††</sup> , many:many, flexible NAT (overlapping IPs) <sup>††</sup> , PAT <sup>††</sup> , transparent mode			
Policy-based Routing	Routing decisions based on combinations of Source IP, Destination IP and IP Service <sup>††</sup>			
Multicast	Secure multicast forwarding with full IGMpv1, v2, v3 support <sup>††</sup>			
Authentication	RADIUS, Active Directory <sup>††</sup> , LDAP <sup>††</sup> , internal user database			
DDNS	Support for services offered by the following dynamic DNS providers: dyndns.org, yi.org, no-ip.com and changeip.com			
User Database	100 (SonicOS Standard)/150 (SonicOS Enhanced)			
VoIP	Full H.323v1-5, SIP, gatekeeper support, inbound/outbound bandwidth management, call tracking and monitoring, full interoperability with most VoIP gateway and communications devices			
System	TZ 170 SP Wireless	TZ 170 SP	TZ 170 Wireless	TZ 170
Zone Security	Yes <sup>††</sup>			
Object-based Management	Yes <sup>††</sup>			
Management and Monitoring	Local CLI, Web GUI (HTTP, HTTPS), SNMP v2; Global management with SonicWALL GMS			
Logging and Reporting	ViewPoint, Local Log and Syslog			
Failover/Failback				
WAN/WAN/Analog	Yes	Yes <sup>††</sup>	N/A	N/A
WAN/WAN	Yes	Yes <sup>††</sup>	Yes <sup>††</sup>	Yes <sup>††</sup>
WAN/Analog	Yes	Yes	N/A	N/A
Load Balancing	Yes, with percent-based, round robin and spill-over <sup>††</sup>			
Standards	TCP/IP, UDP, ICMP, HTTP, HTTPS, IPSec, ISAKMP/IKE, SNMP, DHCP, PPPoE, L2TP, PPTP, RADIUS			
Wireless Standards	802.11b/g, WEP, WPA, TKIP, 802.1x, EAP-PEAP, EAP-TTLS	-	802.11b/g, WEP, WPA, TKIP, 802.1x, EAP-PEAP, EAP-TTLS	-

## SonicWALL TZ 170

TZ 170 10 Node (US/Canada)  
01-SSC-5555

TZ 170 10 Node 8x5 Support Bundle (US/Canada)  
01-SSC-5549

TZ 170 10 Node Comprehensive Gateway Security Bundle (US/Canada)  
01-SSC-5820

TZ 170 25 Node (US/Canada)  
01-SSC-5558

TZ 170 25 Node 8x5 Support Bundle (US/Canada)  
01-SSC-5551

TZ 170 25 Node Comprehensive Gateway Security Bundle (US/Canada)  
01-SSC-5821

TZ 170 Unrestricted Node (US/Canada)  
01-SSC-5561

TZ 170 Unrestricted Node 8x5 Support Bundle (US/Canada)  
01-SSC-5553

TZ 170 Unrestricted Node Comprehensive Gateway Security Bundle (US/Canada)  
01-SSC-5822

### NOTE:

Comprehensive Gateway Security Bundles include 1 year of 8x5 support, Content Filtering Service, Gateway Anti-Virus, Anti-Spyware and Intrusion Prevention Service as well as ViewPoint reporting software.

## SonicWALL TZ 170 SP

TZ 170 SP 10 Node (US/Canada)  
01-SSC-5730

# Specifications

Hardware	TZ 170 SP Wireless	TZ 170 SP	TZ 170 Wireless	TZ 170
<b>Interfaces</b>	(7) 10/100 Ethernet (WAN, 5-port LAN switch, optional port)			
<b>802.3af Power over Ethernet (Receive)</b>	Yes, Port 1	–	Yes, Port 1	–
<b>Processor</b>	SonicWALL Security Processor			
<b>Memory (RAM)</b>	64MB			
<b>Flash Memory</b>	8MB			
<b>Integrated Modem</b>	v.92 Analog Modem			–
<b>Antennas</b>	Dual, External 5 dBi Diversity	–	Dual, External 5 dBi Diversity	–
<b>Radio Power</b>	Note: Power output of the radio will change to comply with local regulatory authority limitations 802.11b Up to 21 dBm/125 mW Max 802.11g Up to 19 dBm/79 mW Max	–	802.11b Up to 21 dBm/125 mW Max 802.11g Up to 19 dBm/79 mW Max	–
<b>Channels</b>	Channels 1-11 Channels 1-13 Channels 1-14	US, Canada, Taiwan EU, Korea Japan	US, Canada, Taiwan EU, Korea Japan	– – –
<b>Radio Receive Sensitivity</b>	(-86,-78,-70,-68) dBm at multiple (6, 24, 48, 54) Mbps	–	(-86,-78,-70,-68) dBm at multiple (6, 24, 48, 54) Mbps	–
<b>Power Supply</b>	12 W			
<b>Power Input</b>	100 to 240 VAC, 60-50 Hz, 6 A			
<b>Max Power Consumption</b>	10.6 W	9.4 W	9.4 W	10.6 W
<b>Total Heat Dissipation</b>	36.1 BTU	32.1 BTU	32.1 BTU	36.1 BTU
<b>Certifications</b>	ICSA IPsec 1.0d Pending: ICSA Firewall 4.1, FIPS 140-2, EAL-2			ICSA Firewall 4.1 ICSA IPsec 1.0d, FIPS 140-2 Pending: EAL-2
<b>Dimensions</b>	9.07 x 6.63 x 1.63 in 23.03 x 16.84 x 4.14 cm			
<b>Weight</b>	1.40 lbs 0.64 kg	1.15 lbs 0.52 kg	1.40 lbs 0.64 kg	1.15 lbs 0.52 kg
<b>Major Regulatory Compliance</b>	FCC Class B, ICES Class B, CE, C-Tick, VCCI, BSMI, MIC, UL, cUL, TUV/GS, CB, NOM			
<b>Environment</b>	40-105° F, 5-40° C		Humidity 10-90% non-condensing	
<b>MTBF</b>	7.5 years	11.7 years	7.9 years	13.3 years

<sup>†</sup>Testing Methodologies: Maximum performance based on RFC 2544 (for firewall). Actual performance may vary depending on conditions and activated services.

<sup>\*\*</sup>Requires SonicOS Enhanced 2.5 or greater 1) 30-day service included 2) 30-day service included 3) 30-day 10-user service included

<sup>\*\*\*</sup>Throughput measured using HTTP file downloads

## SonicWALL Value-added Security Services

SonicWALL Internet security appliances integrate seamlessly with an expanding array of value-added security services to provide a comprehensive security solution. Gateway anti-virus, anti-spyware, intrusion prevention and content filtering can be deployed over both the wired and wireless LANs.

For more information on SonicWALL security services, including Gateway Anti-Virus, Anti-Spyware and Intrusion Prevention Service, Network Anti-Virus and Content Filtering Service please visit our Web site at

<http://www.sonicwall.com/products/vpnsoft.html>

### SonicWALL TZ 170 Wireless

TZ 170 Wireless 10 Node  
(US/Canada)  
01-SSC-5710

TZ 170 Wireless 25 Node  
(US/Canada)  
01-SSC-5712

TZ 170 Wireless Unrestricted Node  
(US/Canada)  
01-SSC-5714

### SonicWALL TZ 170 SP Wireless

TZ 170 SP Wireless 10 Node  
(US/Canada)  
01-SSC-5740

### SonicWALL Comprehensive Gateway Security Suite

TZ 170 Series Unrestricted Node  
01-SSC-5844

TZ 170 Series 10 and 25 Node  
01-SSC-5845

### SonicWALL Gateway Anti-Virus, Anti-Spyware and Intrusion Prevention Service

TZ 170 Series Unrestricted Node  
01-SSC-5751

TZ 170 Series 10 and 25 Node  
01-SSC-5752

### SonicWALL Content Filtering Service Standard

TZ 170 Series Unrestricted Node  
01-SSC-5505

TZ 170 Series 10 and 25 Node  
01-SSC-5508

### SonicWALL Content Filtering Service Premium Business Edition

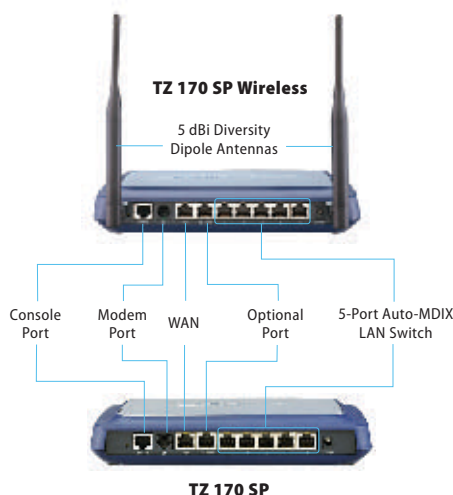
TZ 170 Series  
01-SSC-5650

### SonicWALL SonicOS Enhanced Firmware Upgrade

TZ 170 Series  
01-SSC-5568

#### NOTE:

Comprehensive Gateway Security Suite includes 1 year of 8x5 support, Content Filtering Service, Gateway Anti-Virus, Anti-Spyware and Intrusion Prevention Service as well as ViewPoint reporting software.



## SonicWALL, Inc.

1143 Borregas Avenue  
Sunnyvale CA 94089-1306

T +1 408.745.9600  
F +1 408.745.9300

[www.sonicwall.com](http://www.sonicwall.com)

